



Surface Texture Of Spray Polyurethane Foam

Spray Polyurethane Foam Alliance

To order copies of this publication, call 800-523-6154 and request Stock Number AY 145

MISSION STATEMENT

The mission of the Technical Committee is to provide a wide range of technical service to the Spray Polyurethane Foam industry such as, but not limited to:

1. Review existing documents and serve as a clearing house to ensure the “Continuity of Value” of technical information published by SPFA and others concerning the products and services to our industry;
2. Review, research, develop and issue documents concerning new products, systems and services AND
3. To identify, explore, develop, and communicate an understanding of technical issues facing our industry.

TECHNICAL COMMITTEE MEMBERS

Roger Morrison, Chairman

NCFI Polyurethanes

John Courier

Equipment & Coating Technology

John Hatfield

Penta Engineering Group, Inc.

Tim Leonard

ERSystems

Mary Bogdan

Honeywell

Larry Smiley

Poly-Tek

John Stahl

Preferred Solutions, Inc.

Irene Schwechler

Gaco Westren

Chuck Skalski

Gaco Western

Dan Hensley

Hensley Coating Inc.

Scott Brown

BaySystems North America LLC

Roger Lock

MacTech Engineering & Consulting

Jack Moore

West Roofing Systems, Inc.

Bruce Schenke

BASF

Robert Smith

Invista

David Lewis

Coastal Coatings Inc.

Don Lenaker

Resin Technology/Henry Company

AD HOC MEMBER

Laverne Dagleish

CUFCA

Jay Zhang

Convenience Products

This brochure was developed to aid specifiers in choosing elastomeric protective coatings for use over spray-applied polyurethane foam. The information provided herein, based on current customs and practices of the trade, is offered in good faith and believed to be true, but is made WITHOUT WARRANTY, EITHER EXPRESS OR IMPLIED, AS TO FITNESS, MERCHANTABILITY, OR ANY OTHER MATTER. SPFA DISCLAIMS ALL LIABILITY FOR ANY LOSS OR DAMAGE ARISING OUT OF ITS USE. Individual manufacturers and contractors should be consulted for specific information. Nominal values which may be provided herein are believed to be representative, but are not to be used as specifications nor assumed to be identical to finished products. SPFA does not endorse the proprietary products or processes of any individual manufacturer, or the services of any individual contractor.

Surface Texture of SPF:

SPF surface texture is the resulting surface from the final pass of SPF. The following terms are used to describe the types of SPF surfaces: smooth, orange peel, coarse orange peel, verge of popcorn, popcorn, treebark, and overspray.

In SPF roofing applications, the texture of the sprayed foam is important in the performance of the roofing system. The rougher the texture the more coating is required to provide the minimum dry film thickness specified. When the surface becomes too rough or uneven, it is difficult to successfully provide the minimum specified coating thickness to all surface areas of the foam.

SURFACE TEXTURE OR FINISH

1. The SPF surface must be free of moisture, frost, dust, debris, oils, tars, grease or other materials that will impair adhesion of the protective coating.
2. Any damage or defects to the SPF surface must be repaired prior to the protective covering application.
2. The final SPF surface texture will fall under one of the following labels:

1)	Smooth
2)	Orange Peel
3)	Coarse Orange Peel
4)	Verge of Popcorn
5)	Popcorn
6)	Treebark

4. Textures numbered 1-3 are acceptable for the application of a protective coating. Number 4, Verge of Popcorn, is acceptable if properly coated. Textures numbered 1-4 are acceptable for aggregate covered surfaces. Numbers 5-6 are not acceptable. They must be removed and refoamed to an acceptable surface.

See the following pages for photos and a complete description of the surface textures.

Acceptable 1, 2, 3	If Properly Coated 4	Unacceptable 5 and 6
--------------------	----------------------	----------------------

Smooth Surface Texture

Description: The surface shows spray undulation and is ideal for receiving a protective coating.



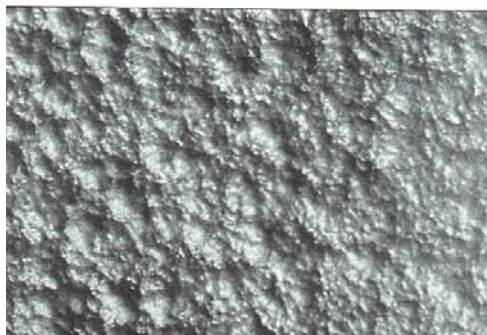
Orange Peel Surface Texture

Description: The surface shows a fine texture and is compared to the exterior skin of an orange. This surface is considered acceptable for receiving a protective coating.



Coarse Orange Peel Surface Texture

Description: The surface shows a texture where nodules and valleys are approximately the same size and shape. This surface is acceptable for receiving a protective coating because of the roundness of the nodules and valleys.



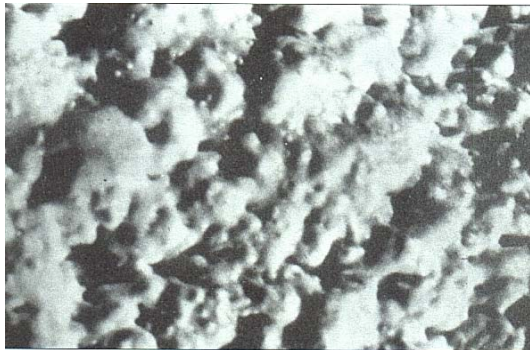
Verge of Popcorn Texture

Description: The verge of popcorn surface texture is the roughest texture suitable for receiving the protective coating. The surface shows a texture where nodules are larger than valleys with the valleys relatively curved. This surface is acceptable for receiving a protective coating only because of the relatively curved valleys. However, the surface is considered undesirable because of the additional amount of coating material required to protect the surface properly.



Popcorn Surface Texture

Description: The surface shows a coarse texture where valleys form sharp angles. This surface is unacceptable for proper coating and protection.



Trebark Surface Texture

Description: The surface shows a coarse texture where valleys form sharp angles. This surface is unacceptable for proper coating and protection.

